

# HFO5 SERIES TUBE-ICE MACHINE

HFO5-1", HFO5-1 1/4" & HFO5-1 1/2"



The HFO5 Series Tube-Ice machine continues the Vogt tradition of providing long lasting machine reliability, delivered capacity and lower energy cost solutions. This 5 ton of ice per day machine utilizes HFO refrigerants with low GWP and zero ODP.

Available as a self contained water cooled unit or air-cooled remote, the HFO5 will provide you with years of dependable service without the fear of refrigerant obsolescence.

Heavy-duty industrial construction, automatic operation, energy efficiency and the best warranty in the business make the Vogt HFO5 Series the only "clear" choice for your ice making needs.

### HFO5 Standard Features:

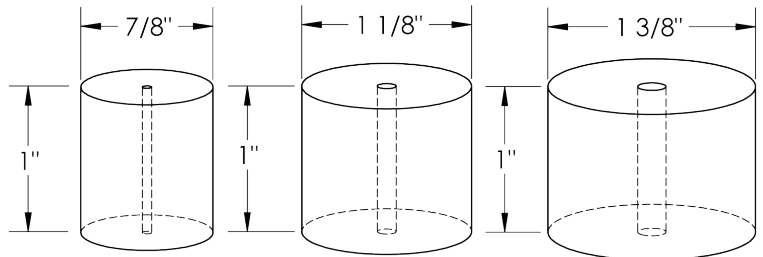
- ★ 25 Year Evaporator Warranty
- ★ R513A Refrigerant
- ★ Allen-Bradley PLC with thermocouples, pressure transducers and multiple built-in safeties
- ★ 10.1" wide HMI display with remote access capability\*
- ★ Water-cooled or remote air-cooled operation
- ★ Export crating (ISPM-15 Rated)
- ★ Electronic Ice bin thermostat
- ★ Voltage - 208/230v.,3p.,60hz.

*\*Requires connection to Internet (ethernet connection)*

### HFO5 Options:

- ★ Voltage - 460v.,3p.,60hz.
- ★ Voltage - 400v.,3p.,50hz.
- ★ Condenser for sea water
- ★ Stainless steel casings
- ★ "CE" Approval (400v, 50hz only)
- ★ Canadian Registration Number (CRN)
- ★ Australian Wiring Code
- ★ Dual Ice Feature (cylinder and crushed ice)
- ★ Cutter for 1-1/2" long ice
- ★ Cutter for crushed ice operation

### HFO5 Tube-Ice Available in Three Ice Sizes:



Not to Scale

Model	Machine Capacity					
	Make-Up Water Temperature					
	50°F (10°C)		70°F (21°C)		90°F (32 °C)	
Lbs	Kg	Lbs	Kg	Lbs	Kg	
HFO5 - 1"	11,670	5293	11,000	4990	9,315	4225
HFO5 - 1 1/4"	11,200	5080	10,000	4536	8,400	3810
HFO5 - 1 1/2"	10,700	4853	9,500	4309	7,900	3583

Water Usage					
Ice Making				Water Cooled Condenser	
Gallons/100lbs	Liters/100lbs	Gallons/minute	Liters/minute	Gallons/minute	Liters/minute
14.5	54.9	1	3.79	15	56.8
		0.94	3.56		
		0.93	3.52		

Capacity rating is average for the model. Individual machines may vary +/- 5%. Capacity based on ambient (air) temperature of 90 ° F. (32 ° C).

Makeup water usage includes 20% blowdown.

### Vogt Ice LLC

1000 W. Ormsby Avenue  
 Louisville, KY 40210  
 (800) 853-8648, (502) 635-3000  
 info@vogtice.com

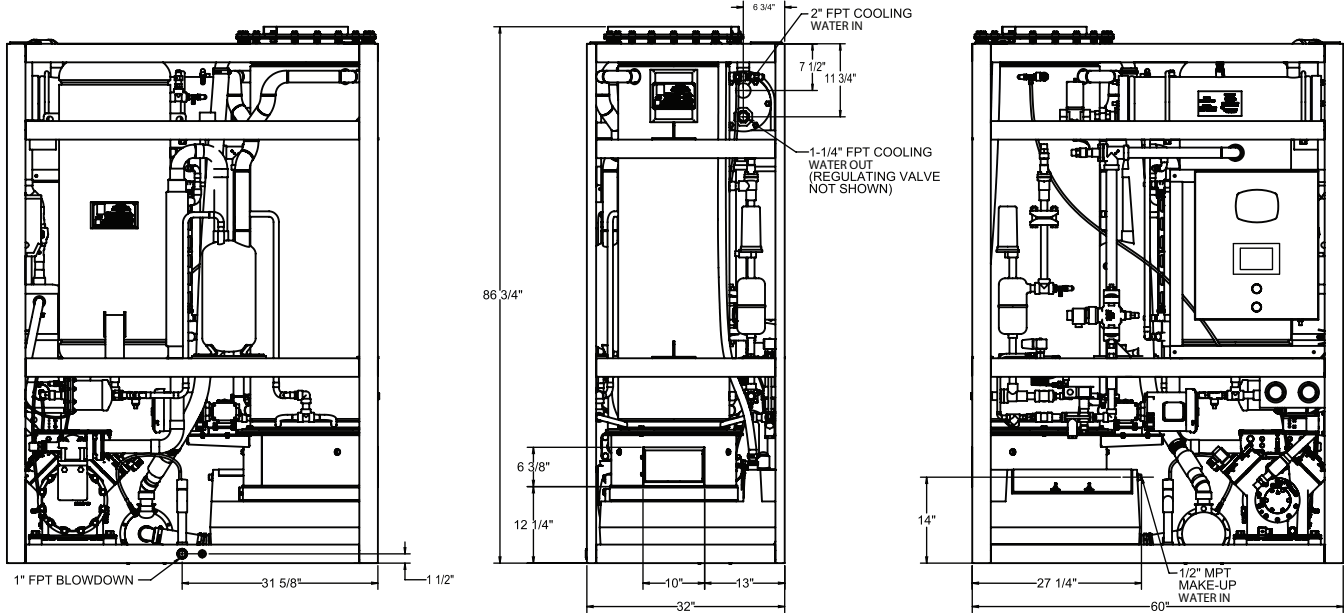


[www.vogtice.com](http://www.vogtice.com)

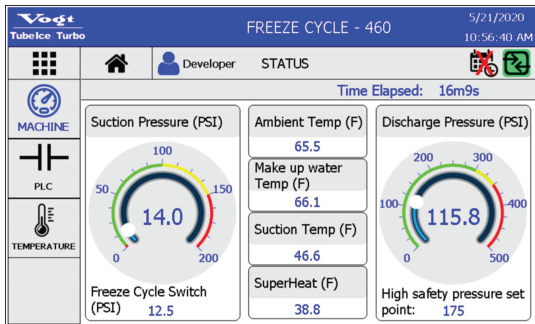


# HFO5 SERIES TUBE-ICE MACHINE

HFO5-1", HFO5-1 1/4" & HFO5-1 1/2"



## Vogt HMI Display



## New Control Features and Benefits

- ✦ Allen-Bradley PLC and sensors replace FPS, Hi/Low safety switches, thaw timer, DPS, etc.
- ✦ Secure remote connectivity\* with 5 user levels for extra security.
- ✦ Instant email notifications\* sent to all or only some users when a machine fault occurs for shorter down time.
- ✦ HMI displays tips for machine faults for quicker and easier troubleshooting.
- ✦ Detailed history and trends for quicker troubleshooting and early identification of growing problems.
- ✦ Can safely test each individual output for faster and easier troubleshooting.

\*Requires connection to Internet (ethernet connection)

	Ice Machine Electrical Information						Motor Information			
	Air Cooled			Water Cooled			Compressor	Water Pump	Cutter Motor	Condenser Fan Motor(s)
	Full Load Amps	Minimum Ampacity	Max. Fuse Size (Amps)	Full Load Amps	Minimum Ampacity	Max. Fuse Size (Amps)				
<b>Voltage</b>										
208/230V, 3ph, 60hz	94.7	113.0	190	80.7	99.1	175	18	1-1/2	1/2	(qty 2) @ 1 1/2
460V, 3ph, 60hz	47.4	56.5	95	40.4	49.5	90				
400V, 3ph, 50hz	55.1	66.0	110	48.1	59.0	105	23			

	Machine Weights			
	Ice Machine		Air-Cooled Condenser	
	Lbs	Kg	Lbs	Kg
<b>Shipping Weight</b>	3300	1497	805	365
<b>Operating Weight</b>	2975	1349	680	308

Line Size Connections		
<b>Ice Making Water</b>		1/2" MPT
<b>Drain Connections</b>		1" FPT
<b>Condenser Water Lines</b>	<b>In</b>	2" FPT
	<b>Out</b>	1 1/4" FPT

<b>Refrigerant Line Sizes from ice machine to air-cooled condenser</b>	See air-cooled condenser installation instruction packet.
--	---

## Operating Conditions

The ice machine shall not be subjected to an atmospheric temperature lower than 50 ° F. (10 ° C.) nor higher than 90 ° F. (32 ° C.) without effect on performance. Water for condensing or ice making purposes shall be non-corrosive.

The water shall be at a constant pressure no less than 30lbs. at the ice machine location. The condition of the water to make satisfactory ice shall be the responsibility of the purchaser.