

HFO10 SERIES TUBE-ICE MACHINE

HFO10-1", HFO10-1 1/4" & HFO10-1 1/2"



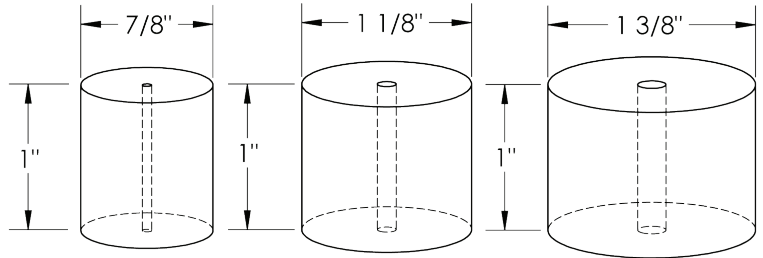
The HFO10 Series with a capacity of 10 tons of ice per day is Vogt's new champion of the mid-size Tube-Ice machine line utilizing HFO refrigerants with low GDP and low ODP. Available as a self contained water cooled unit, the HFO10 will provide you with years of dependable service without the fear of refrigerant obsolescence.

Heavy-duty industrial construction, automatic operation, energy efficiency and the best warranty in the business make the Vogt HFO10 Series the only "clear" choice for your ice making needs.

HFO10 Standard Features:

- ★ 25 Year Evaporator Warranty
- ★ 3 Year Domestic U.S. Parts Warranty (Includes compressor)
- ★ Voltage - 208/230v.,3p.,60hz.
- ★ HFO Refrigerant (40+ year refrigerant)
- ★ Highly efficient, reliable Bitzer screw compressor
- ★ Water-cooled operation
- ★ Export crating (ISPM-15 Rated)
- ★ Power monitor on 50hz units

HFO10 Tube-Ice Available in Three Ice Sizes:



Not to Scale

Energy usage based on makeup water temperature of 70 °F. (21 °C.), ambient (air) temperature of 90 °F. (32 °C.). Capacity rating is average for the model. Individual machines may vary +/- 5%. Capacity based on ambient (air) temperature of 90 °F. (32 °C.). Capacities based on testing of 1-1/4" model and subject to change. Makeup water usage includes 20% blowdown.

HFO10 Options:

- ★ Voltage - 460v.,3p.,60hz.
- ★ Voltage - 400v.,3p.,50hz.
- ★ Electro-fin coated condenser
- ★ Condenser for sea water
- ★ PLC Control panel (programmable logic controller)
- ★ Cutter for 1-1/2" long ice
- ★ Stainless steel casings
- ★ Remote switch box
- ★ Power monitor (for 60hz.)
- ★ "CE" Approval (400v, 50hz only)
- ★ Canadian Registration Number (CRN)

Model	Machine Capacity						Energy Usage KWH/ 100 lbs	Water Usage					
	Make-Up Temperature							Ice Making				Condenser	
	50°F (10°C)		70°F (21°C)		90°F (32 °C)			Gal/ 100lbs	Liters/ 100lbs	GPM	LPM	GPM	LPM
HFO10 - 1"	21,545	9773	18,895	8571	16,500	7484	2.36	14.5	54.9	2.35	8.89	90	340
HFO10 - 1 1/4"	19,775	8970	18,000	8165	15,690	7117				2.12	8.02		
HFO10 - 1 1/2"	18,595	8435	15,690	7117	14,415	6539				3.01	2.04		

Vogt Ice LLC
 1000 W. Ormsby Avenue
 Louisville, KY 40210
 (800) 853-8648, (502) 635-3000
 info@vogtice.com

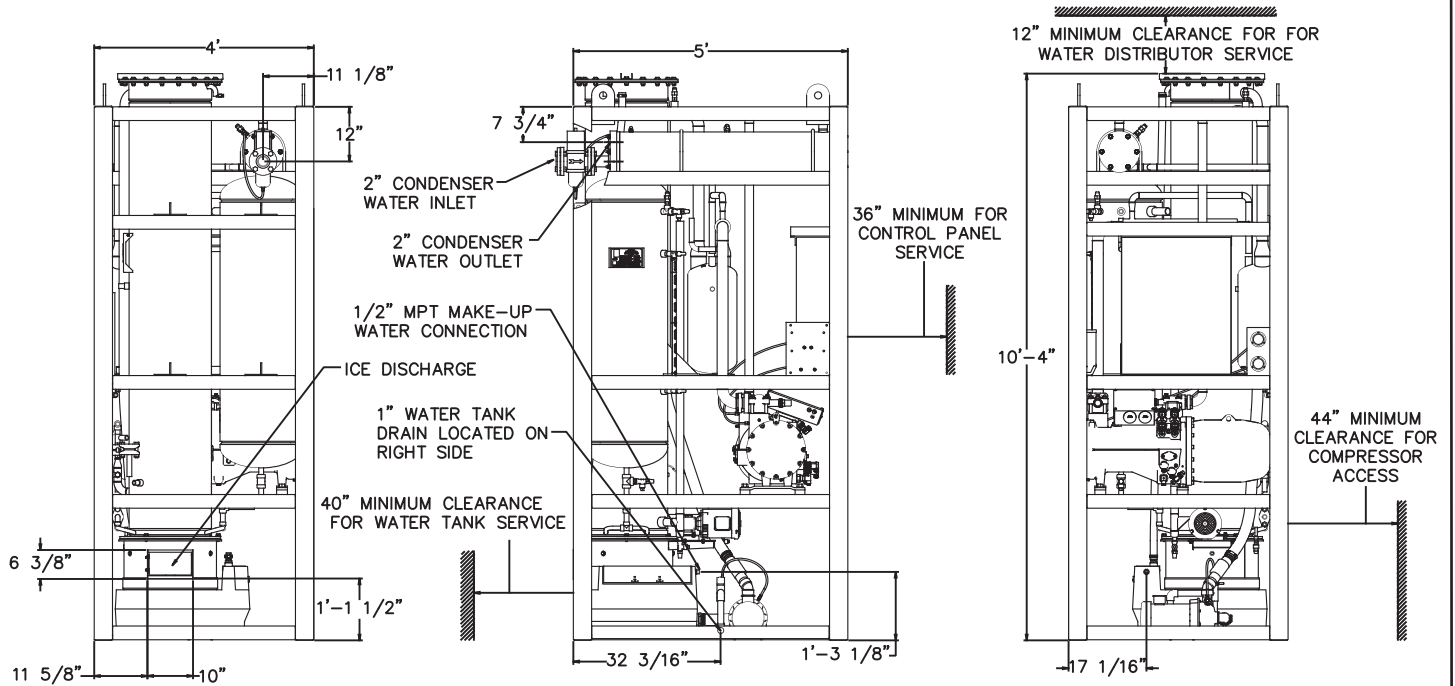


www.vogtice.com



HFO10 SERIES TUBE-ICE MACHINE

HFO10-1", HFO10-1 1/4" & HFO10-1 1/2"



Ice Machine Electrical Information			
Voltage	Water Cooled		
	F.L.A.	Min. Ampacity	Max. Fuse Size (Amps)
208/230V, 3ph, 60hz	88.0	124.8	175
460V, 3ph, 60hz	44.0	54.0	95
400V, 3ph, 50hz	53.5	65.6	115

Motor Information		
Water Pump	Cutter Motor	Compressor
H.P.		
1 1/2	1/2	35

	Lbs	Kg
Shipping Weight	4800	2177
Operating Weight	4900	2223

Line Size Connections	
Ice Making Water	1/2" MPT
Drain Connections	1" FPT
Condenser Water Lines	2" FPT

Operating Conditions

The ice machine shall not be subjected to an atmospheric temperature lower than 50 ° F. (10 ° C.) nor higher than 90 ° F. (32 ° C.) without effect on performance. Water for condensing or ice making purposes shall be non-corrosive.

The water shall be at a constant pressure no less than 30lbs. at the ice machine location. The condition of the water to make satisfactory ice shall be the responsibility of the purchaser.