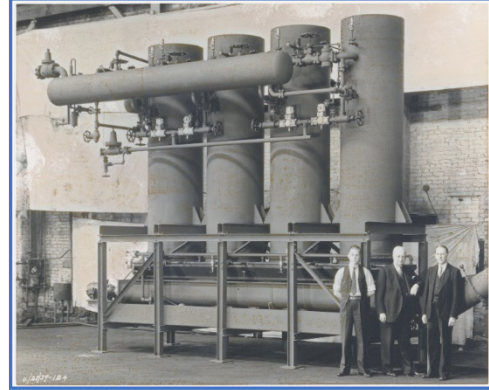


The Vogt Advantage

Vogt Ice, LLC is the world's leading manufacturer of high-capacity ice making equipment. Vogt's ice making products deliver both on-demand and continuous ice production. Our Tube-Ice and Turbo Ice brands are the industry benchmarks in the foodservice, food processing, industrial, chemical, concrete, commercial and institutional markets. Vogt's imbedded trademarks of quality and modernization continue to give birth to new heat exchange and cooling solutions. Our forward-thinking focus on sustainability enables our customers to transition their operations to meet the many evolving environmental regulations.

Since 1938, and the sale of over 20,000 Tube Ice machines operating in nearly every country in the world, Vogt's reputation has never waned from its "number one" market leading position.



Vogt supplies the marketplace with a range of high-capacity ice making solutions ranging from 4,000 lbs. up to 125 tons of ice production per day and backs its products with a 25-year evaporator warranty.

Vogt's uncontested operating reliability, consistent delivered capacity, longevity, and commitment to innovation make it the global standard in the ice machine manufacturing industry.

Cutting edge technologies and proven engineering expertise enable Vogt to remain in front of evolving environmental constraints, meet the challenges of energy efficiency and global warming requirements, and provide refrigerant solutions (i.e. HFO blends) to replace those targeted for phase-out such as R404A. Additionally, further innovations in controls that eliminate mechanical safety switches and timers, provide immediate entrée to operational and performance information, streamline user-friendly data retrieval, and allow remote Wi-Fi access, are designed to streamline and enhance the operator's experience.



In Summary, the integration of Vogt's design successes, continued attention to customer details, relentless commitment to quality, and drive to build solutions for tomorrow make Vogt the clear choice when choosing ice machines that deliver lower energy consumption, reduced operating and maintenance cost, increased production capacity, and drive a higher asset utilization and performance.